

MEMBERS STATES' INDUCTION SEMINAR

NORMATIVE AND OPERATIONAL WORK AND ITS IMPACT

RAF TUTS, Director
Global Solutions Division



UN HABITAT
FOR A BETTER URBAN FUTURE

WHAT IS THE DEFINITION OF NORMATIVE WORK?



IMPLEMENTING
THE NEW
URBAN AGENDA

1. **Development of norms and standards;**
2. Support governments and others to **integrate** the norms and standards into legislation, policies and development plans;
3. Support governments and others to **implement** legislation, policies and development plans based on the international norms, standards and conventions.

UN Evaluation Group (2012)

RESOLUTION ON NORMATIVE AND OPERATIONAL WORK

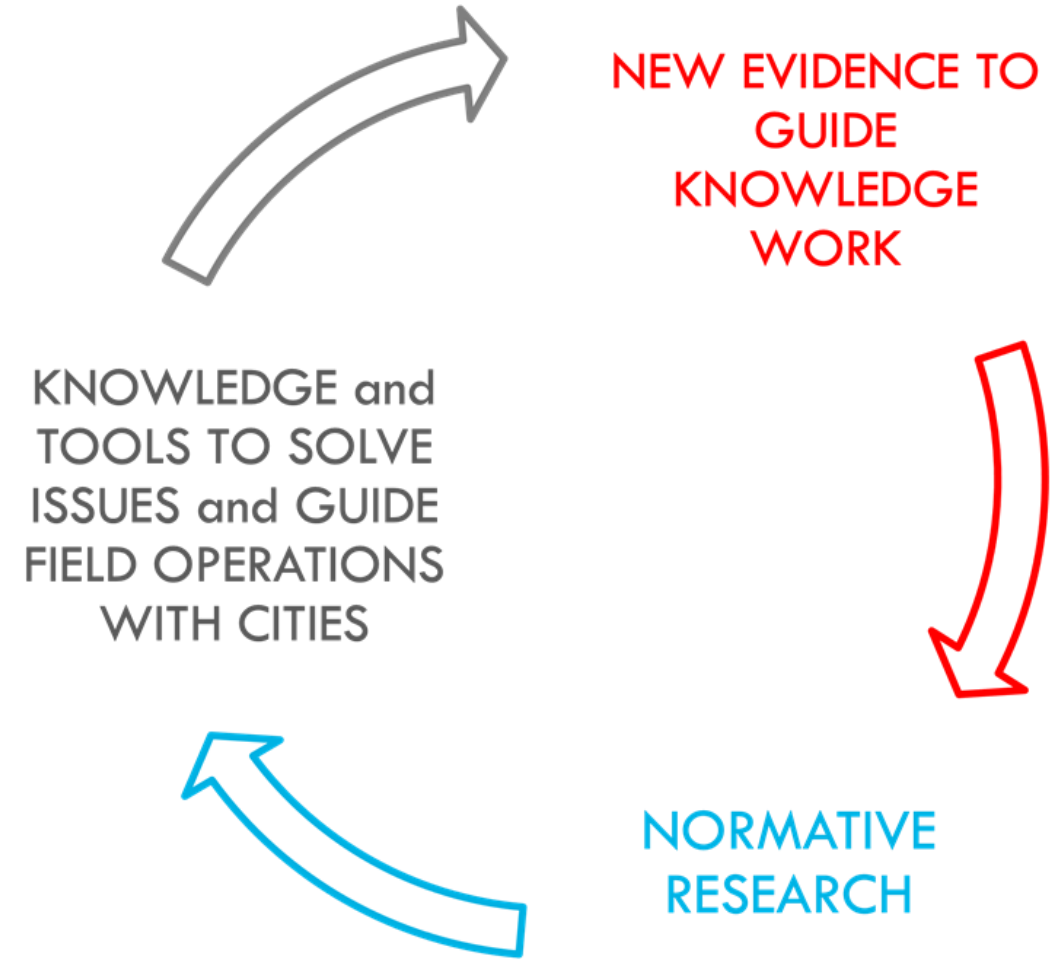


IMPLEMENTING
THE NEW
URBAN AGENDA

UN-Habitat should ensure that

- its normative and operational activities are **balanced**;
- its normative work guides and is **integrated** into its operational work; and that
- the experiences gathered in the operational field **feed into** its normative work.

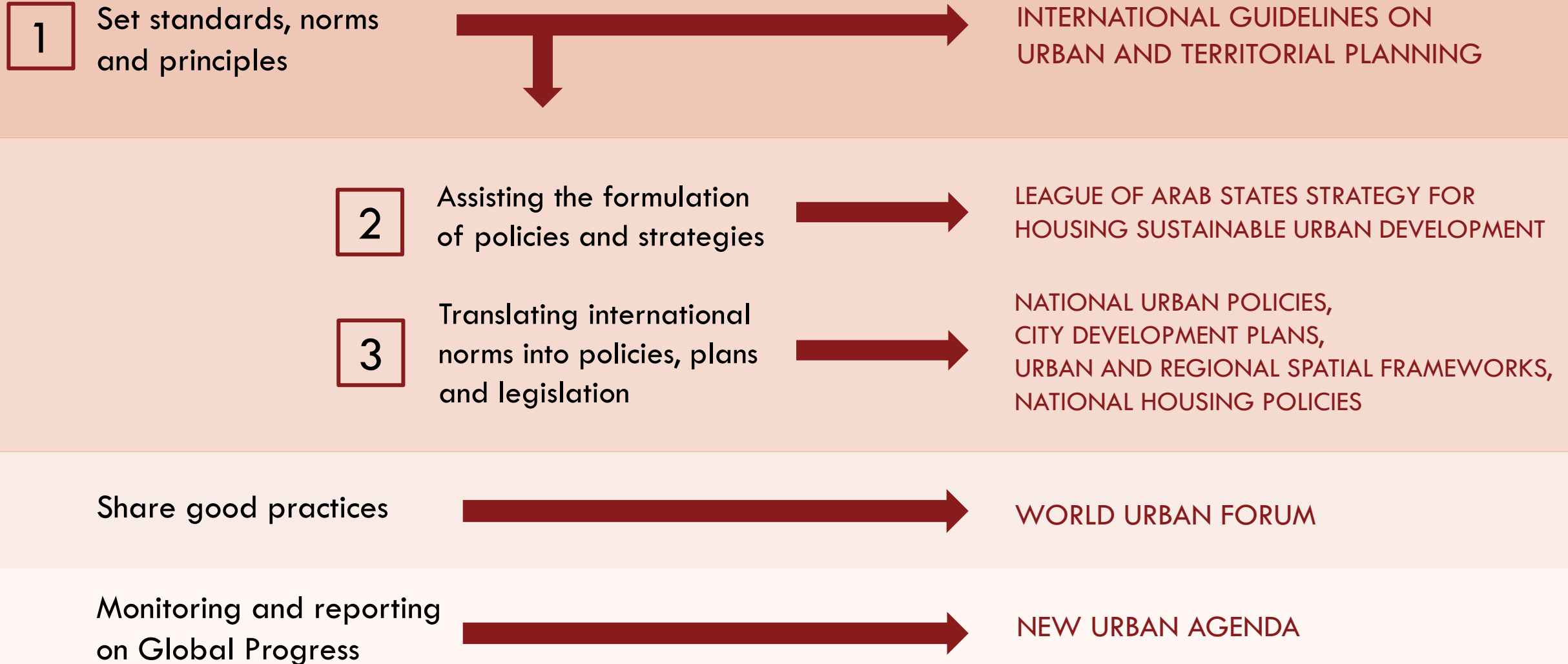
- UN General Assembly 72/226 (20 December 2017)



IMPLEMENTATION OF NORMATIVE WORK 'ON THE GROUND'



IMPLEMENTING
THE NEW
URBAN AGENDA





IMPACT OF THE WORK OF UN-HABITAT



GUIDANCE FOR CITIES ON THE PANDEMIC

UN-Habitat global report "**Cities and Pandemics: Towards a More Just, Green and Healthy Future**"

IMPACT

Provided updated **evidence-based strategy and policy recommendations and technical advice** to cities and national governments

PILOT PROJECT

Within the *European Healthy Cities Network*

WHO requested technical guidance of UN-Habitat to respond to 13 cities' call for lessons and future recommendations on integrating health into urban crisis preparedness

How cities emerge from the pandemic will have an enormous impact on public health, social cohesion, prosperity and our prospects for achieving the SDGs



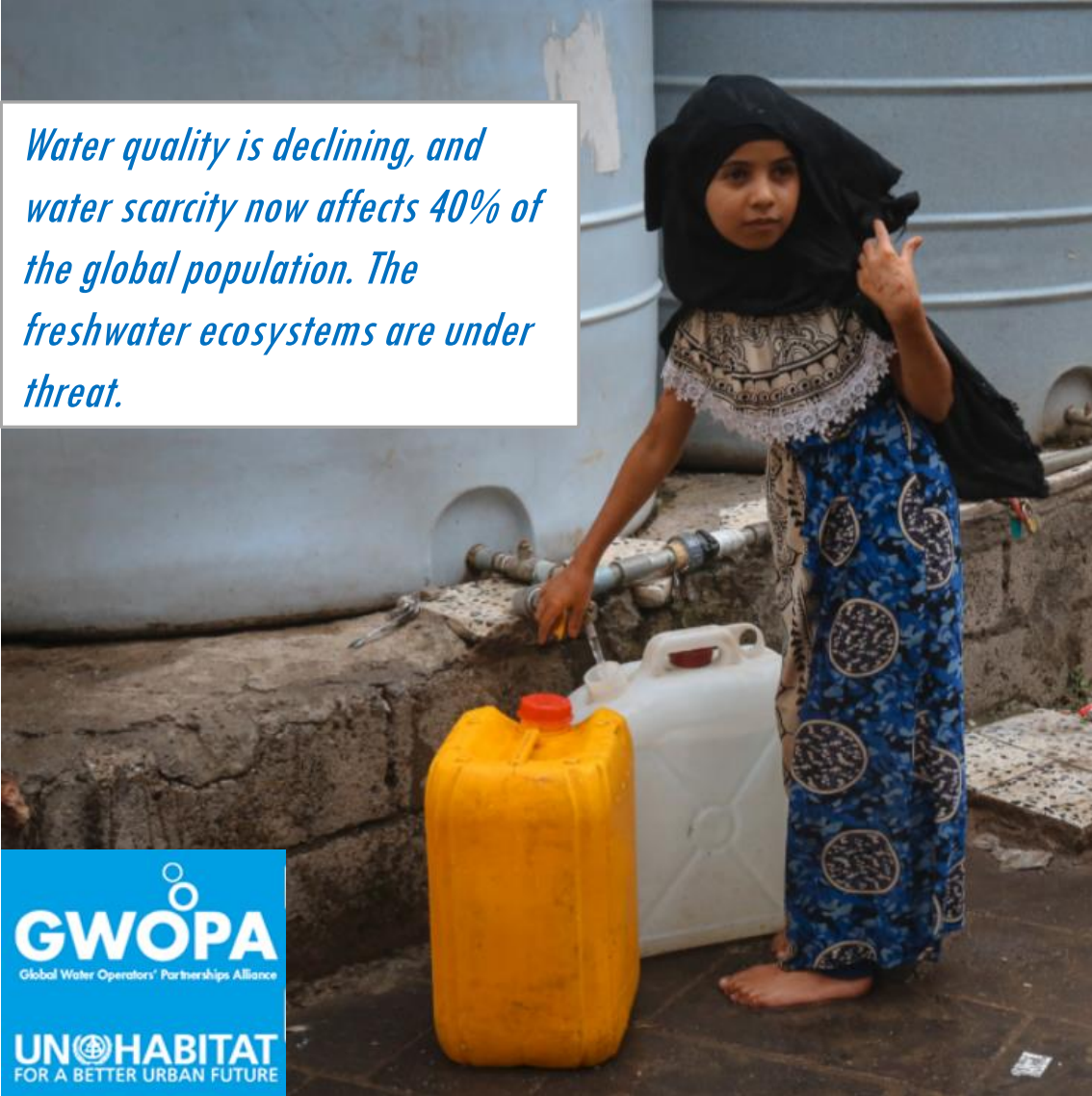
GLOBAL WATER OPERATORS' PARTNERSHIP ALLIANCE (GWOPA)



IMPLEMENTING
THE NEW
URBAN AGENDA

CONNECTING WATER AND SANITATION SERVICE PROVIDERS TO SHARE KNOWLEDGE

Water quality is declining, and water scarcity now affects 40% of the global population. The freshwater ecosystems are under threat.



IMPACT

Water Operators' Partnerships in mentored cities have **strengthened their management, financial and technical skills**, and are better able to **implement operational and organizational changes** as well as **sustainability** of water services.

Utility performance improvements have been observed in 82 service providers.

PARTNERS European Commission, Federal Ministry of Economic Cooperation and Development, ODIF, WaterLinks, Ministry of Foreign Affairs of the Netherlands, IHE Delft

GWOPA
Global Water Operators' Partnerships Alliance

UN HABITAT
FOR A BETTER URBAN FUTURE

UN HABITAT
FOR A BETTER URBAN FUTURE

NEPAL: IMPROVED LAND AND TENURE SECURITY



IMPLEMENTING
THE NEW
URBAN AGENDA

IMPACT

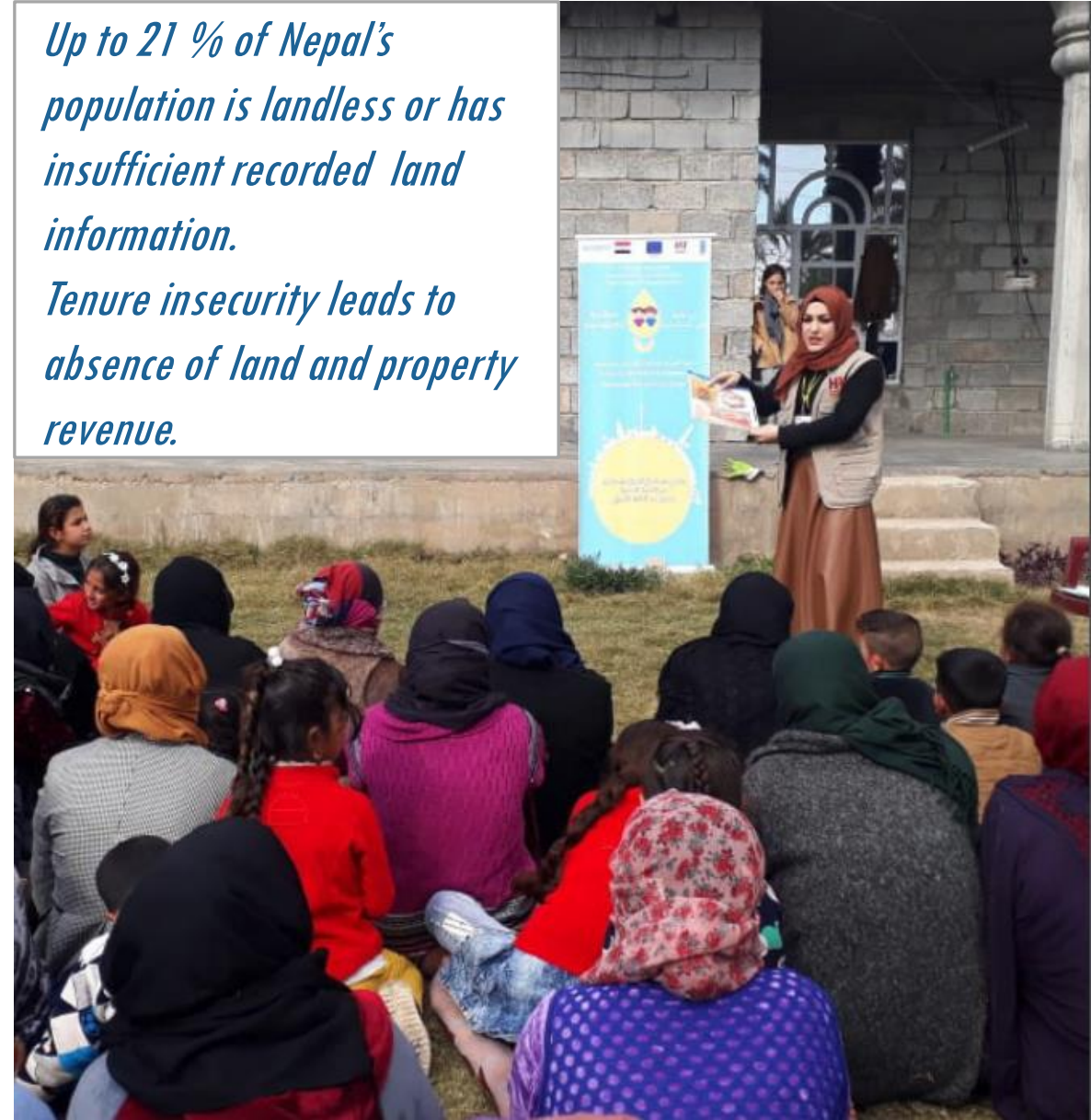
Groundbreaking reform in the land administration and management that addressed the conditions of **13,643 vulnerable households without or with insufficient land documents** and **regularized informal land tenure**.

Identification of highly **vulnerable households for emergency assistance** during the pandemic.

PARTNERS Government of Nepal, pilot Municipalities, Community Self Reliance Centre, Lumanti Support Group for Shelter, Swedish International Development Cooperation Agency, Swiss Agency for Development and Cooperation, UN-Habitat Global Land Tool Network

Up to 21 % of Nepal's population is landless or has insufficient recorded land information.

Tenure insecurity leads to absence of land and property revenue.



SOMALIA: INCREASING MUNICIPAL REVENUE, PLANNED CITY EXTENSION AND INTEGRATION OF THE DISPLACED



IMPLEMENTING
THE NEW
URBAN AGENDA

IMPACT

Registered 21,400 properties with an estimated **increase in local revenue** by USD500,000 per annum in Baidoa Municipality

New settlement that provided **secure tenure** for 2000 households in Baidoa-Barwaaqo

Fostered **local reintegration and social cohesion** between IDPs and hosting communities.

PARTNERS Ministries of Interior, Federal Affairs and Reconciliation and Finance Southwest State; Peace Building Fund, Government of Denmark, Dutch Embassy, European Union, Government of Norway, Swedish International Development Cooperation Agency, Swiss Development Cooperation, United States Agency for International Development, IOM, UN Peacebuilding Fund

Local governments have insufficient municipal revenues for the delivery of essential services for people in urban areas, including some 3 million IDPs.



URBAN LOW EMISSION DEVELOPMENT STRATEGIES (URBAN-LEDS)

IMPACT

‘Urban LEDS’ defined a pathway to partner cities to initiate transition towards a **low emission, resilient, green, and inclusive urban economy and investments**

Produced **integrated low emission and resilient development strategies** with 60 cities in 8 countries
Vertically integrated climate efforts between levels of government produced institutional strengths and local, national, and global impacts

PARTNERS European Commission, ICLEI



The form, connection and function of cities has a significant impact on urban greenhouse gas emissions.

Political and economic crisis in Venezuela since 2015 has pushed 5.6 million people to flee the country, with 4.6 million moving to cities of neighboring countries.



LATIN AMERICA AND THE CARIBBEAN: INCLUSIVE CITIES, COMMUNITIES OF SOLIDARITY



IMPLEMENTING
THE NEW
URBAN AGENDA

IMPACT

Participatory and place-based methodologies of the project are addressing both the **socio-economic and spatial determinants of inclusion**.

Territorial Plans for neighborhoods integrated a **physical plan** to orient spatial interventions that improve living conditions, and **city-wide community-led actions** based on the needs and rights. Local authorities, institutions and communities are supported to lead and implemented the project interventions.

PARTNERS European Commission, UNHCR, IOM, and UN-Habitat

LEBANON: MANAGING RUBBLE LEFT BY THE BEIRUT EXPLOSION



IMPLEMENTING
THE NEW
URBAN AGENDA



The explosion in Beirut created 400,000 tonnes of rubble and caused damage to properties of 77,000 households, impacting some 300,000 people within a 3 km radius.

IMPACT

Safer urban spaces by damage assessment of 14,000 buildings to establish repair and safety needs.

‘Rubble to Mountain’ model:

- is preventing an environmental crisis by organising for **collection, sorting and designing reuse of the debris in infrastructure works**;
- is providing opportunities for creation of a **circular economy model** for Lebanon, and for income generation for daily labourers;
- is aiming for **durable livelihoods** creation.

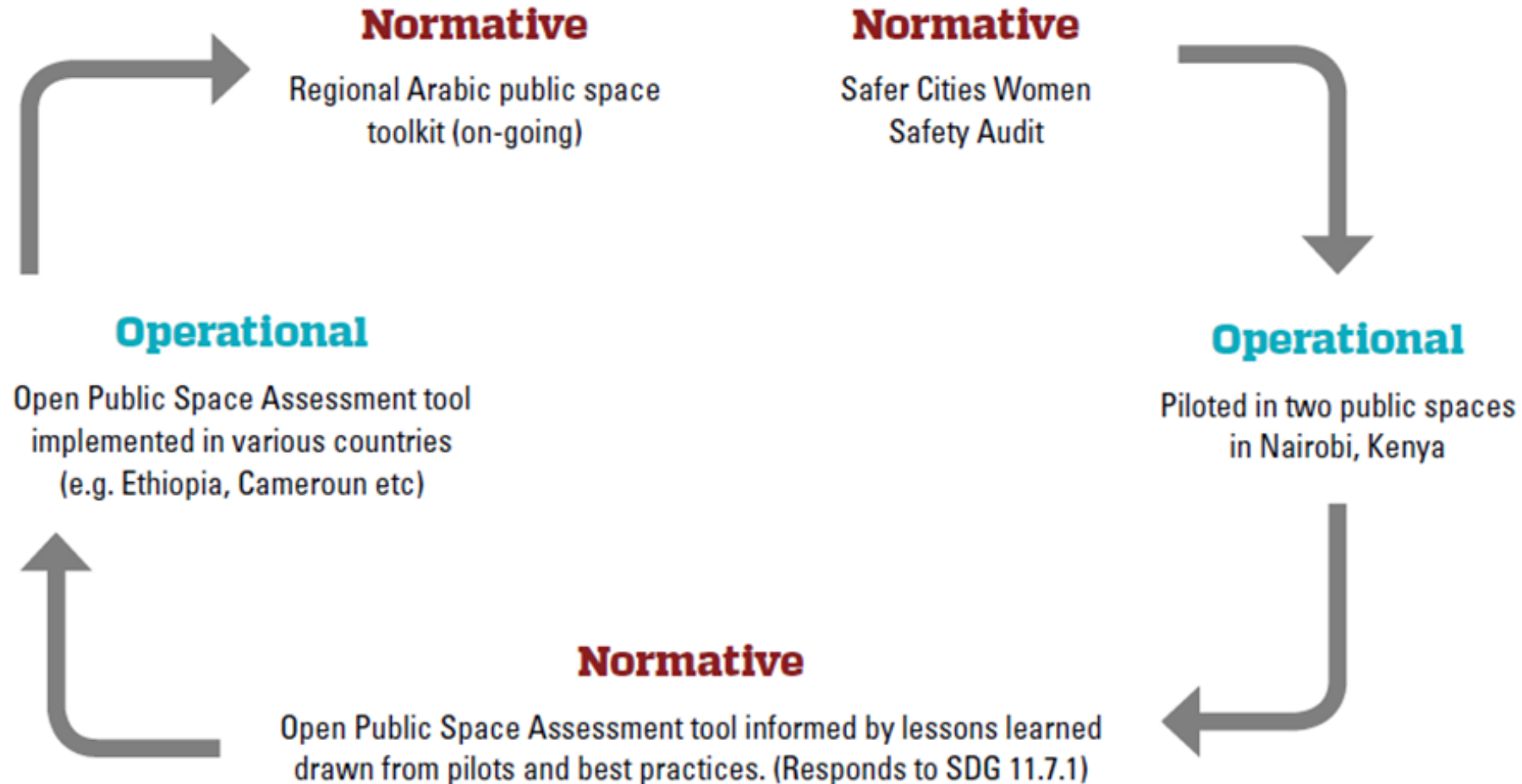
PARTNERS American University of Beirut, Lebanon Reforestation Initiative, Development Inc., Reel-ly, International Rescue Committee, Association of Volunteers in International Service, UNICEF, Beirut Municipality, Beirut Governorate

LINKING NORMATIVE AND OPERATIONAL WORK



IMPLEMENTING
THE NEW
URBAN AGENDA

Operational model, using the example of safe, inclusive and accessible public space (supporting SDG 11.7)



THANK YOU!

UN  **HABITAT**
FOR A BETTER URBAN FUTURE

www.unhabitat.org

